

DRIVECOD

Rotary actuators & Positioning Units

A comprehensive range of products, designed and manufactured from one hand.



ROTAPULS
Incremental rotary encoders



ROTACOD
Absolute rotary & Fieldbus encoders



ROTAMAG
Rotary Magnetic encoder &
Encoder modules



LINEPULS – LINECOD
Linear Absolute & Incremental encoders



DRAW-WIRE
Draw-wire encoders & potentiometers



POSICONTROL
Displays & Signal converters
Encoder Interfaces



DRIVECOD
Rotary Actuators & Positioning units

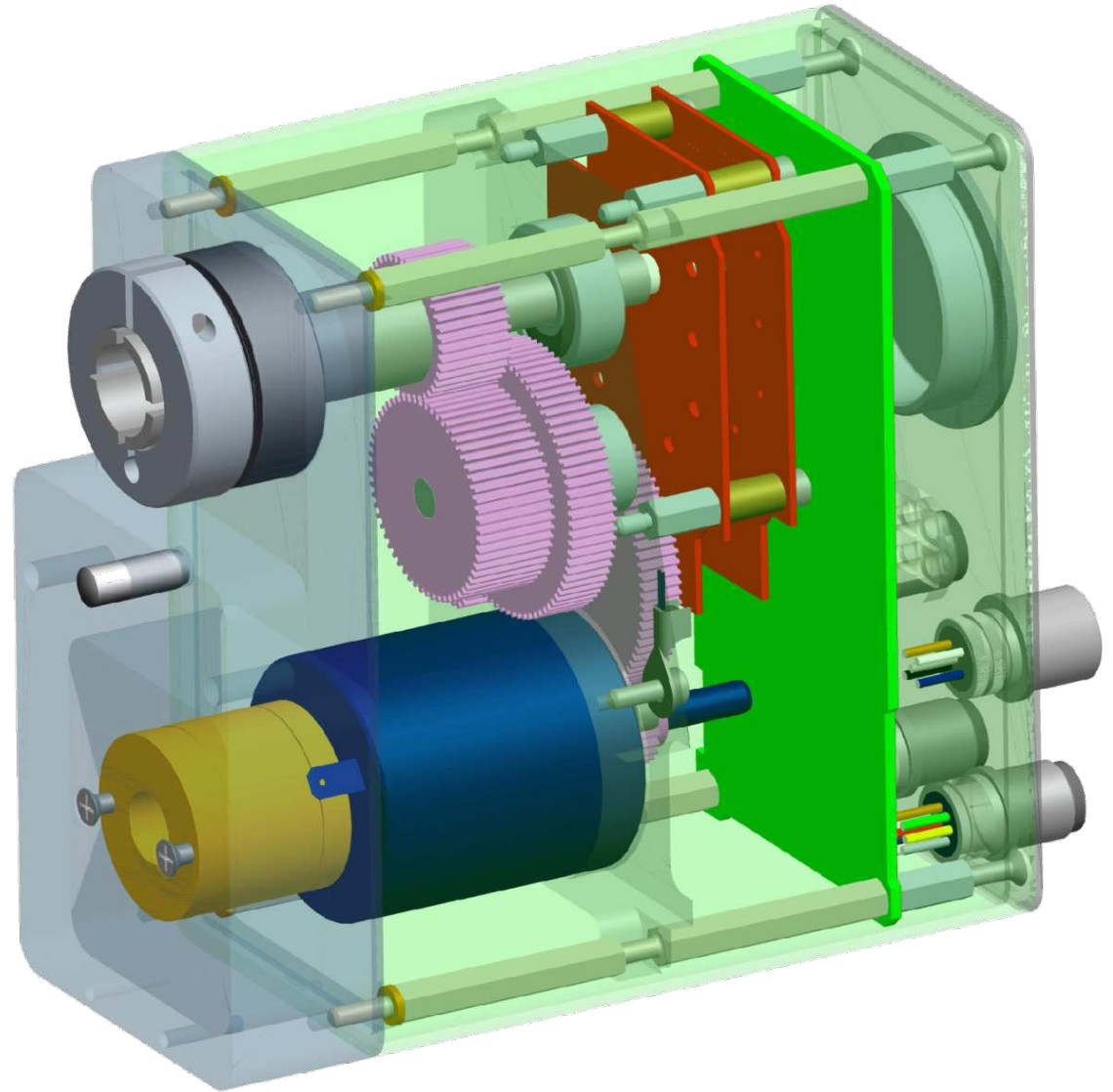


COUPLINGS
Flexible & Transmission couplings

Parts of a rotary actuator

lika

- Brushless motor
- Gearbox
- Brake
- Absolute encoder
- Position Controller & Drive



Product Overview

lika



	RD1A	RD12A	RD4	RD5	RD53
Dimensions [mm]	59 x 125 x 112	59 x 125 x 128	65 x 153 x 160	48 x 88 x 127	48 x 88 x 127
Torque (nominal) Torque (starting)	5 Nm 12 Nm	5 Nm 12 Nm	15 Nm 30 Nm	5 Nm 12 Nm	5 Nm 12 Nm
Shaft speed [rpm]	60 min 240 max	60 min 240 max	63 min 94 max	60	60
Motor brake	–	✓	–	–	✓
Interfaces	CanOpen Profibus-DP Modbus RS485 EtherCAT	CanOpen Profibus-DP Modbus RS485 EtherCAT	CanOpen Profibus-DP Modbus RS485	CanOpen Profibus-DP Modbus RS485	CanOpen Profibus-DP Modbus RS485
Absolute Encoder	1024 x 1024	1024 x 1024	1024 x 1024	1024 x 256	1024 x 256



Torque

5 Nm @ 60rpm (starting 12Nm)
2,5Nm@120rpm (starting 6Nm)
1,2Nm@240rpm (starting 3Nm)

BLDC

High performance brushless motor
integrated (RD12A)

Brake

Ø14mm

Hollow shaft

M12

Connectors, Bus IN/OUT, PWR

LED

Diagnostics for Bus & Power supply

Jog +/-

Buttons for easy calibration

1024x1024

absolute encoder

RS232

service interface (excl. Modbus)



Torque	15 Nm@63rpm (starting 30Nm) 10 Nm@94rpm (starting 24Nm)
BLDC	High performance brushless motor
Gearbox	in oil-bath (continuous operation possible)
Ø14mm	Hollow shaft
M12	Connectors
LEDs	Diagnostics for Bus & Power supply
1024x1024	absolute encoder
3+3	configurable I/O's

RD5, RD53 compact actuator

lika



Torque

5 Nm@60rpm (12Nm peak)

BLDC

High performance brushless motor

Brake

integrated (on RD53 series)

Ø14mm

Hollow shaft

M12

Connectors, Bus IN/OUT, PWR

1024x256

absolute encoder

LED

Diagnostics for Bus & Power supply



CANopen

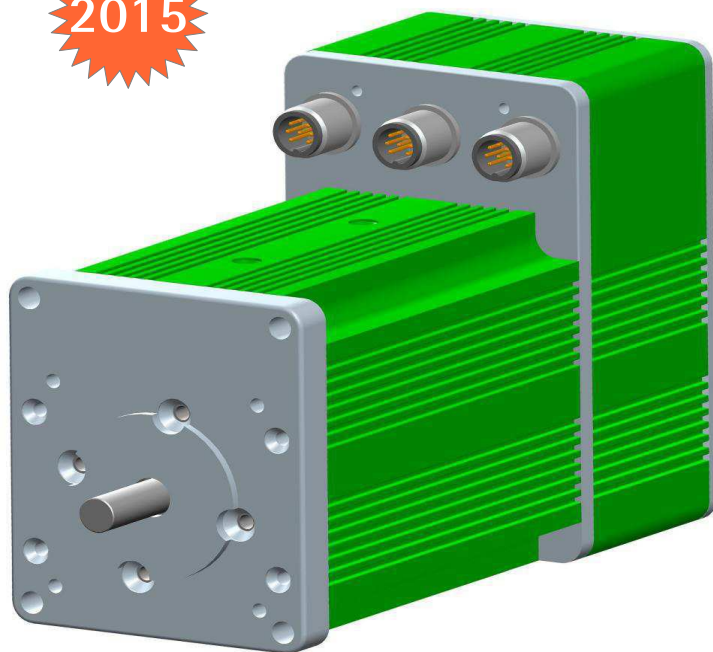
PROFI[®]
PROCESS FIELD BUS
BUS

Modbus

RD6 actuator for external gearbox

lika

2015



Torque
BLDC
NEMA23
Ø8mm
M12
12x16bit
LED

0,426 Nm @ 3000rpm
High performance brushless motor
size flange
Solid shaft
Connectors, Bus IN/OUT, PWR
absolute encoder
Diagnostics for Bus & Power supply

CANopen

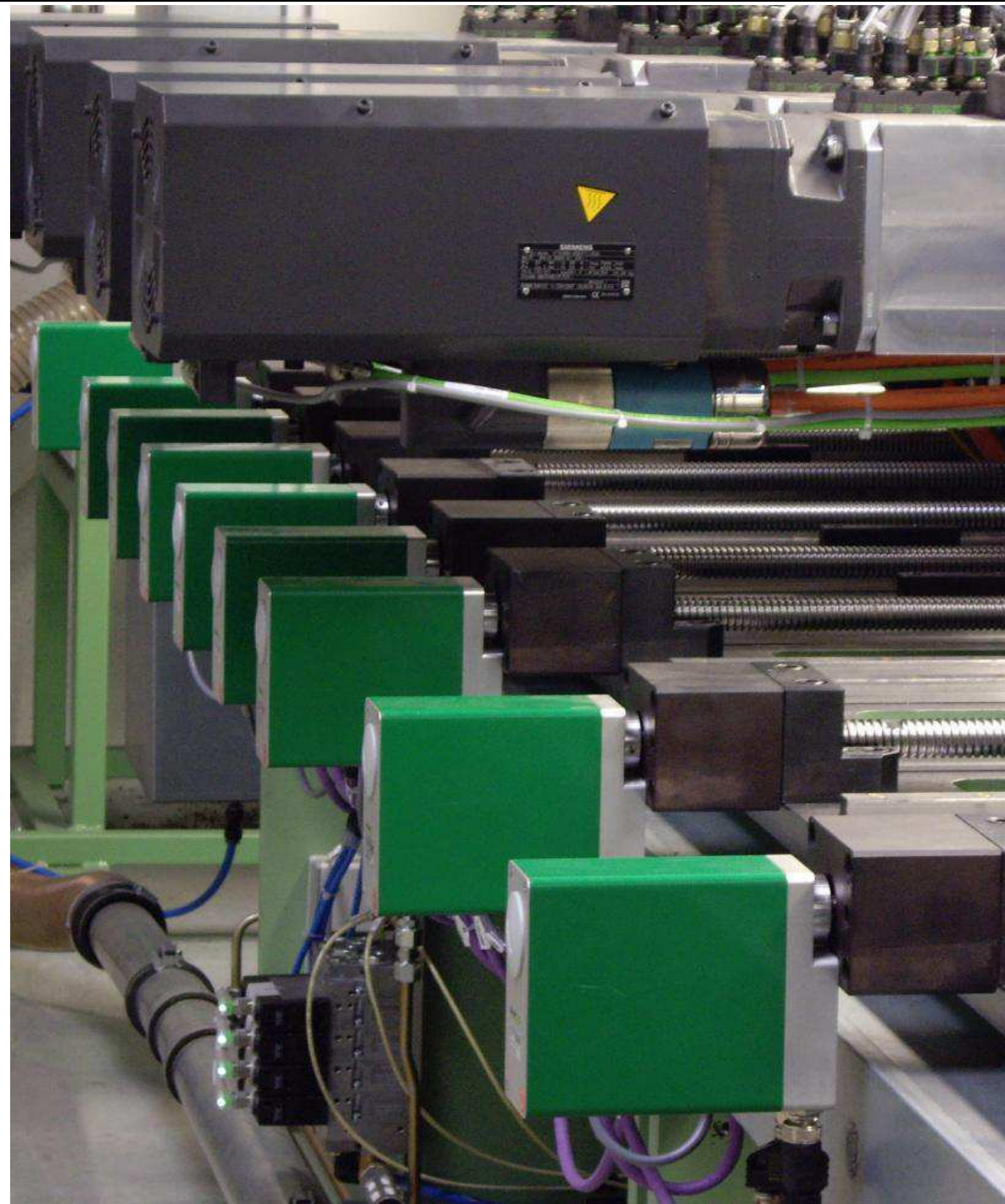
PROFI[®]
PROCESS FIELD BUS
BUS

Modbus

Advantages

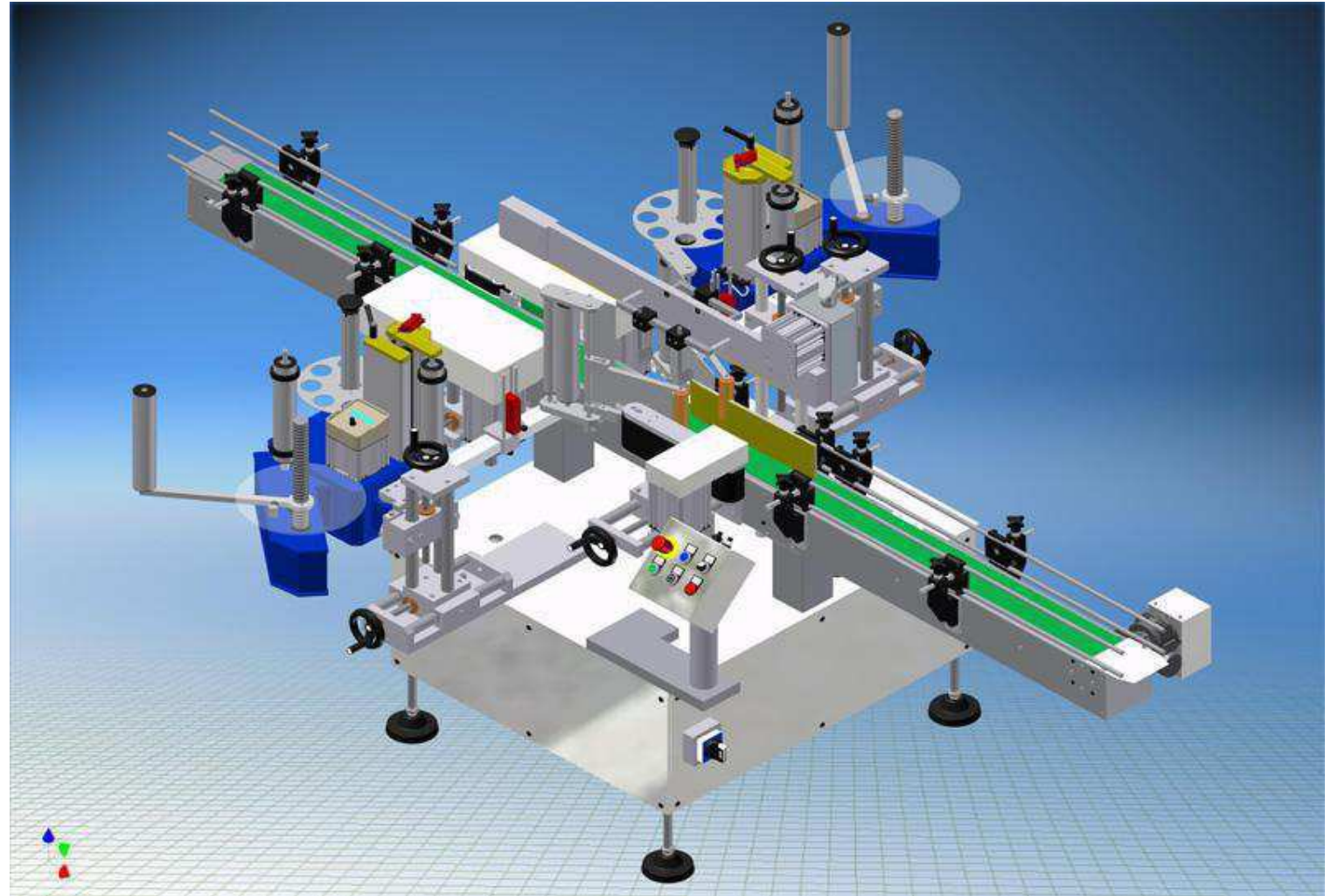
lika

Faster	axis setup
Multiple	adjustments
Precise	positioning
Repeatable	positioning
Centralized	
-> Increased	Productivity
	Flexibility



Axis setting for:

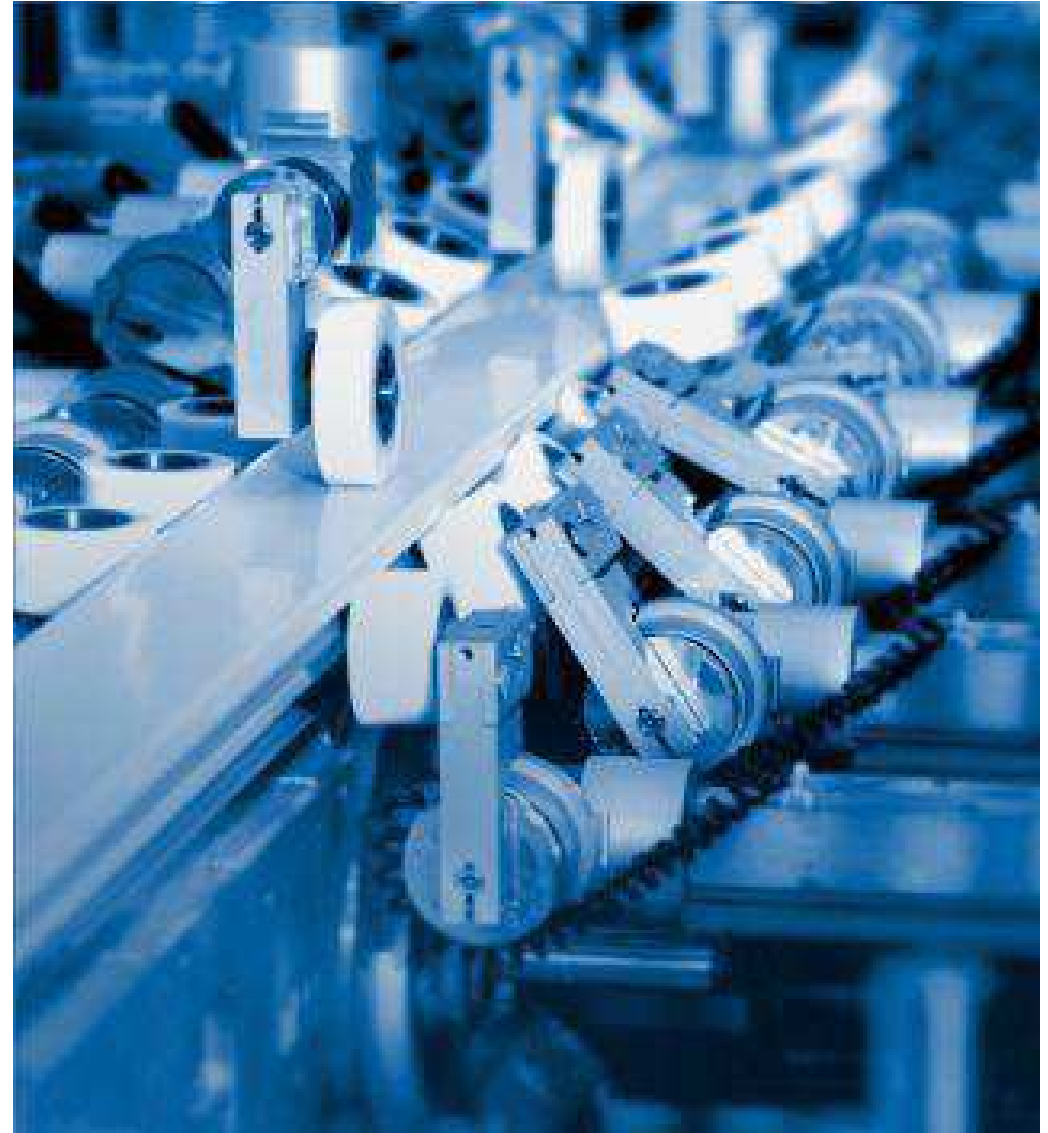
- Bottle height
- Label size
- Feeder/Conveyor
-



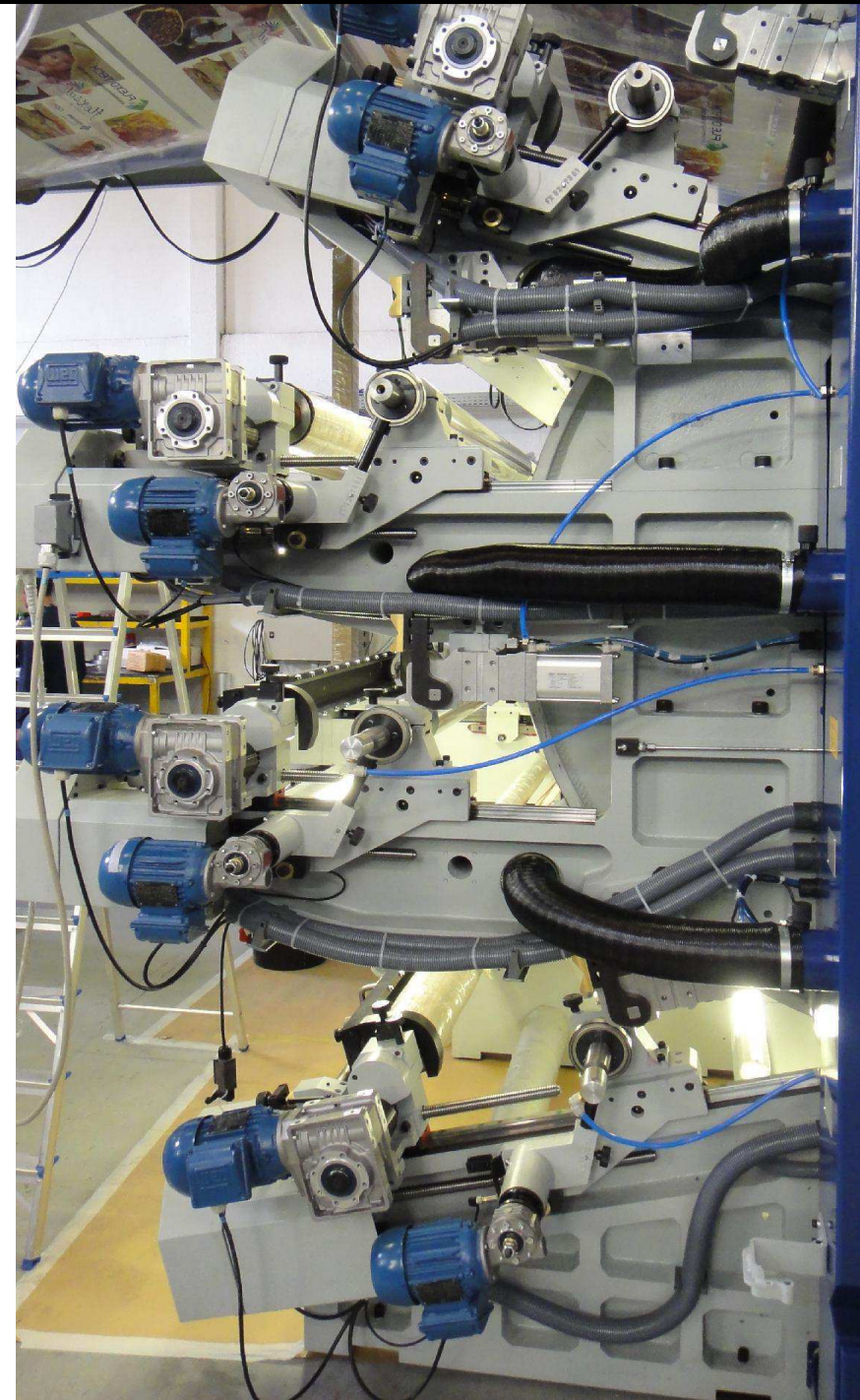
Pastry laminating thickness control



- Material stops
- Height settings
- Edge bending axis
- Suction cup positioning
- Drilling head positioning
- Set-axes on frame working machines
- ...



- Automatic format adjustment
- Distance/Size settings
- Throughput adjustment on flexo & spooling machines, printing presses



LDT10 HMI touch panel

lika



- LCD display with resistive touch screen panel (7-inch 16:9 format)
- Configure & control up to 8 RDxx rotary actuators
- NEMA4 and IP65 protection ratings



LDT10 pages & levels

lika

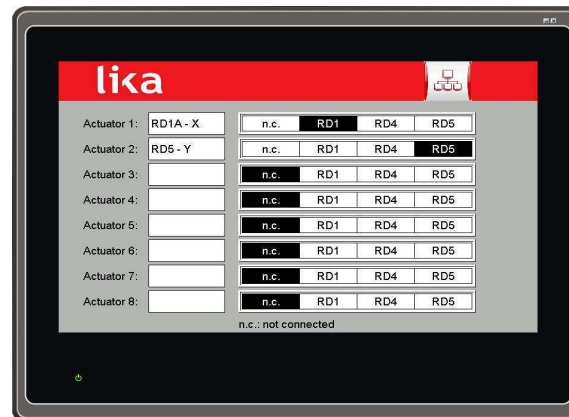
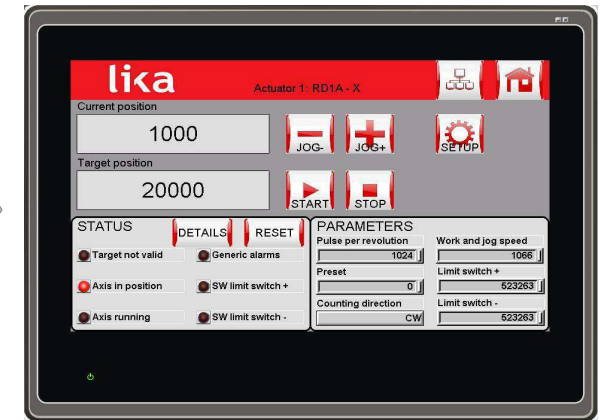
HOME



NETWORK



NODE



3 levels of users:

- **User** can only activate recipes
- **Manager** has complete recipes management
- **Administrator** can manage network and actuators parameters



- To create and activate recipes (set of target positions for each axis)
- Possible to transfer current positions (manually defined) into recipe targets

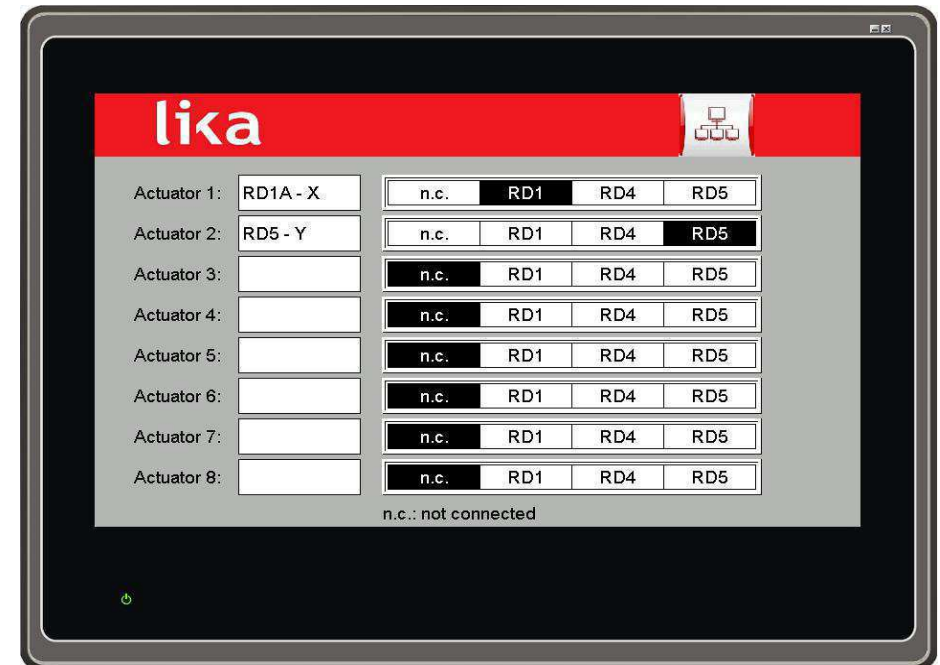


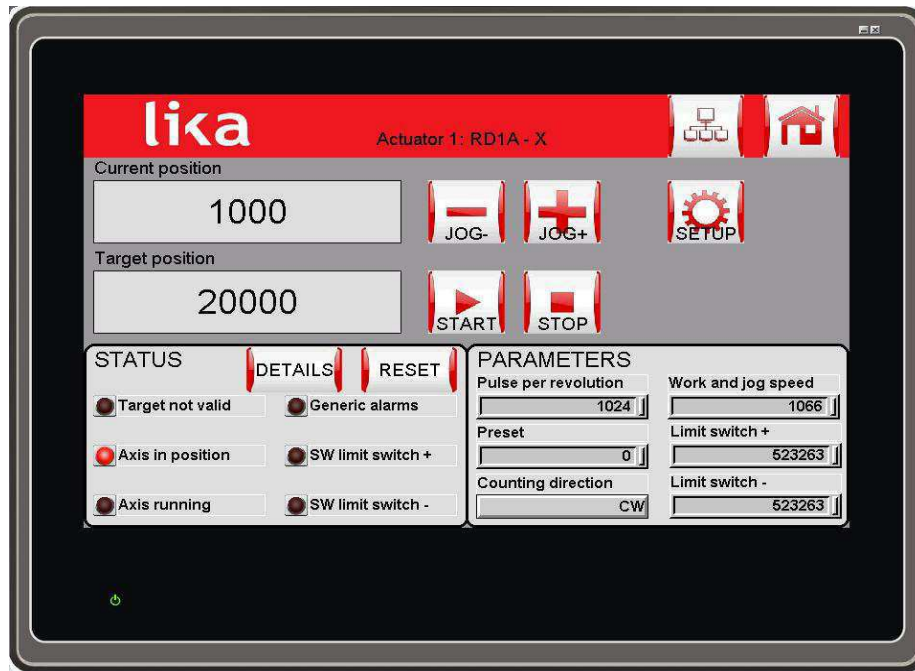
Network control

Allow to enter in Node control, Network setup and different user levels

Network setup

Allows Administrator to name and associate an actuator to each axis (address)





Node control

allows to check position, manual jog, define target, check alarms, set up main parameters, reset, enter in node setup

Node setup

Allows Administrator to set up all actuator parameters



Contact



Smart encoders & actuators

Lika Electronic Srl

Via S. Lorenzo, 25
36010 Carre' (VI) – Italy
Tel. +39 0445 806600
Fax +39 0445 806699
eMail info@lika.it
web www.lika.biz.

